

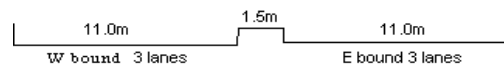
YEAR 2016

CORE STATION 5031

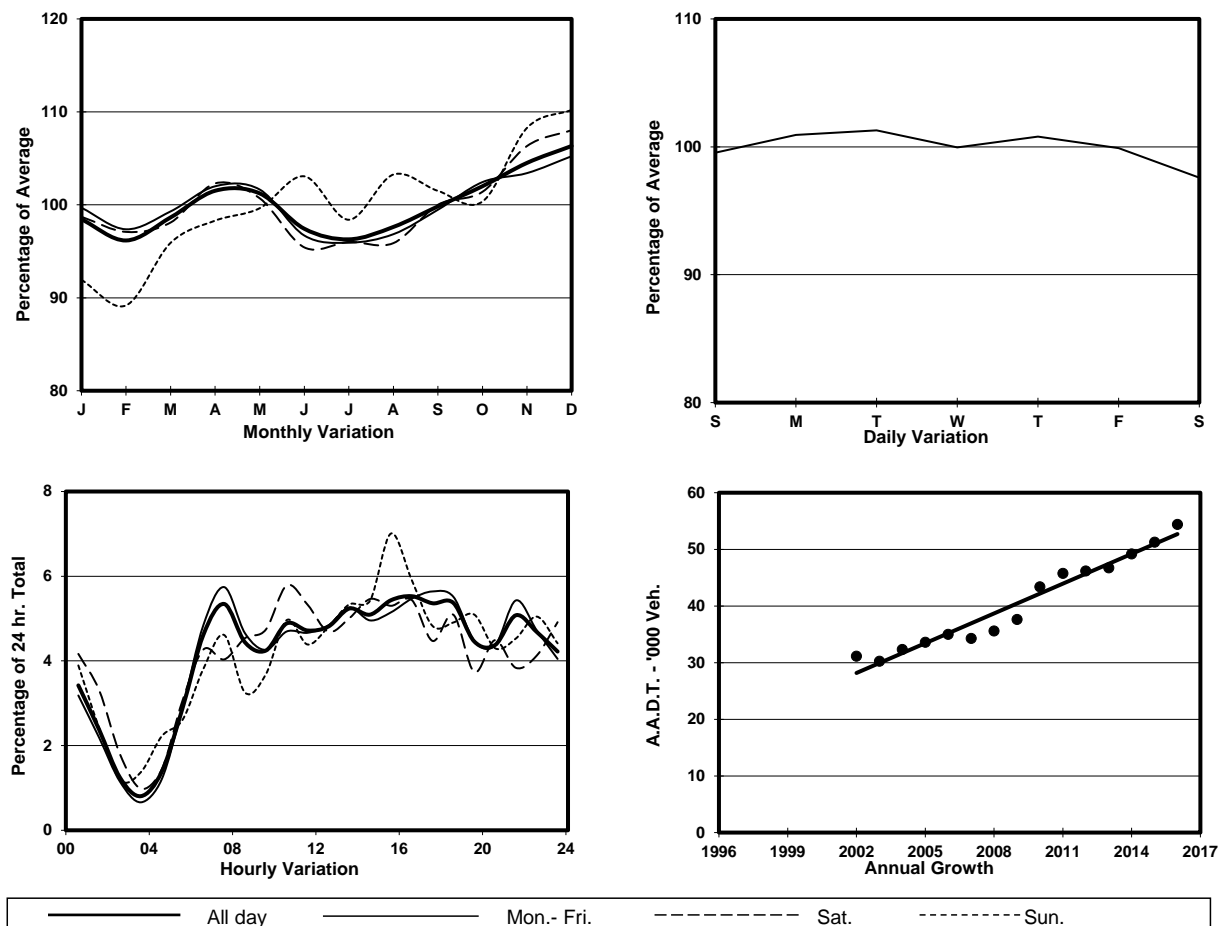
ROAD NETWORK MAJOR

ROAD TYPE EXPRESSWAY

LINK NORTH LANTAU HIGHWAY (from TUNG CHUNG
EASTERN INT to WESTERN END AT CHEK LAP KOK)



1. TRAFFIC FLOW VARIATION AND GROWTH



2. TRAFFIC CHARACTERISTICS (BY DIRECTION)

Parameter	All - Day	Mon. - Fri.	Sat.	Sun.
EAST BOUND				
A.A.D.T.	29180	29440	28200	29020
R 12 / 24 - %	60	60.8	59	57
R 16 / 24 - %	79.4	80.4	75	78.6
AM Peak Hour	0700-0800	0700-0800	0800-0900	0700-0800
One-way flow at AM peak hour	1280	1340	1320	1180
T - % (AM)	-	-	-	-
PM Peak Hour	1800-1900	1800-1900	1800-1900	1600-1700
One-way flow at PM peak hour	1890	1920	1770	2230
T - % (PM)	-	-	-	-
Prop.of commercial vehicles - 16 hr.	-	-	-	-
WEST BOUND				
A.A.D.T.	25230	25350	25020	24880
R 12 / 24 - %	61	60.9	60.8	61.5
R 16 / 24 - %	78.7	79.2	77.2	77.4
AM Peak Hour	0700-0800	0700-0800	0900-1000	0900-1000
One-way flow at AM peak hour	1630	1810	1290	1360
T - % (AM)	-	-	-	-
PM Peak Hour	1700-1800	1700-1800	1600-1700	1600-1700
One-way flow at PM peak hour	1280	1400	1400	950
T - % (PM)	-	-	-	-
Prop.of commercial vehicles - 16 hr.	-	-	-	-

3. OTHER INFORMATION AND COMMENT